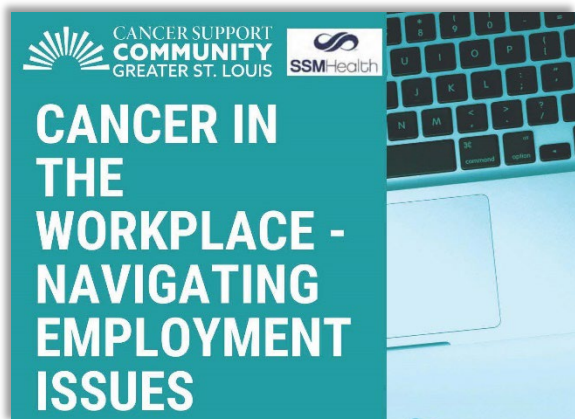




PRESS CONTACT:
Amanda Corcoran
Development & Communications Manager
Cancer Support Community of Greater St. Louis
314-238-2000 ext. 355
acorcoran@cancersupportstl.org

FOR IMMEDIATE RELEASE

CANCER SUPPORT COMMUNITY ADDRESSES CANCER IN THE WORKPLACE



St. Louis, MO. – (July 19, 2022) Each year, 1.8 million people are diagnosed with cancer and of those, 44% are of working age. When an employee has cancer, or is caring for someone with cancer, it can be harder for them to focus on work. That’s why **Cancer Support Community of Greater St. Louis (CSCSTL)** is committed to addressing cancer in the workplace. CSCSTL is offering a free educational workshop; **Cancer In The Workplace- Navigating Employment Issues on Monday, July 25 from 6:00– 7:30 PM.** Ann Plunkett, attorney, and President of Workplace Partners, will present information related to employment, your rights under ADA and FMLA, and short/long term disability.

Cancer Support Community of Greater St. Louis is also partnering with local businesses to reach as many in the St. Louis community as possible by offering its programs and services as part of an employer’s benefits program. Employers provide CSCSTL information and services as part of their open enrollment benefits package to help employees navigate the cancer journey if they or a family member are impacted by cancer, all provided at no charge to the employees. For more information visit cancersupportstl.org/get-support/cancer-in-the-workplace.

Cancer Support Community of Greater St. Louis (CSCSTL) is a non-profit organization whose mission is to ensure that all people impacted by cancer are empowered by knowledge, strengthened by action, and sustained by community. All programs are donor-funded and offered at no charge. Cancer Support Community of Greater St. Louis offers professionally led support groups, educational workshops, nutrition and exercise programs, and stress management classes to empower and educate individuals affected by cancer. For more information, visit www.cancersupportstl.org or call 314-238-2000.